

めぐり
宿場

BOOK

日光街道

Sugito- juku

杉戸宿

Machiaruki
Pocketbook

English



Post station map

Map of Sugito-juku (End of the Edo Period)





Atago Shrine

Shrine watching over the wellbeing of Sugito-juku

data ▶ 4-4 Sugito, Sugito-machi



Giant ginkgo tree several hundred years old to the side of the front shrine (*haiden*)

Atago Shrine is one of the guardian shrines of Sugito-juku. Sugito has endured major fires in the past, and Atago Shrine enshrines deities that provide protection against fires.

Atago Shrine is said to date back to 1705 (middle Edo Period), and legend has it that during the flood of that year, a statue of the deity Atago drifted down and came to rest at the base of the ginkgo tree at Katori Shrine. This statue was enshrined together with the existing deity, and the shrine be-

came the Atago Katori Shrine. Then, at the beginning of the Meiji Period, the name was changed to Atago Shrine.

It is surmised that the giant ginkgo tree in the grounds of the shrine is the same ginkgo tree where the statue came to rest, as mentioned earlier. If the tree was referred to as a giant ginkgo more than three hundred years ago, then naturally the age of the tree would be significantly greater than 300 years.



Kou Shrine / Great Tengu

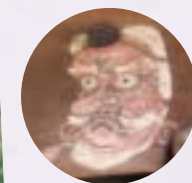
The history of the shrine entered in the historical records of the shrine pavilions dates back to the 14th century.

data ▶ 4-4 Sugito, Sugito-machi



Kou Shrine: Deity with three faces and six arms

From the small hill within the grounds of the Atago Shrine, Kou Shrine watches over the region. According to shrine records, in 1376 samurai from Kanto traveling upstream on the Furutone River were confronted by a fierce windswell, and landed their boat in this area and enshrined the guardian deity. In 1598, there was a merger with Ontake-san and the Great Tengu deity was enshrined, and in 1685, this merged with the Inari Shrine.



Great Tengu: Shrine records are stored in the shrine pavilions.



Next to the Kou Shrine is the Inari Shrine

Shimo-machi 下町

A key area of Sugito-juku and location of the *toyaba* administrative office

MAP No.

12

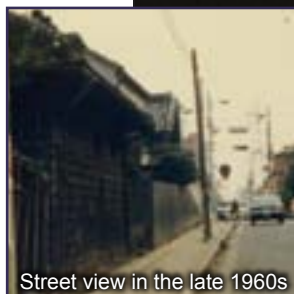


Site of a rest-stop by Emperor Meiji

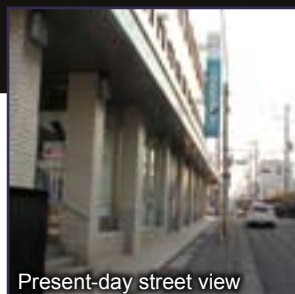
A stone monument inscribed with “Site of a rest-stop by Emperor Meiji” can be seen at the former *toyaba* site. In 1876, this was the site of the prefectural ward office, and during an imperial tour to the Tohoku region, the Emperor made a rest-stop here.

data

- ▶ 2-13-12 Sugito, Sugito-machi
- ▶ In front of the Sugito Branch of the Sumitomo Mitsui Trust Bank



Street view in the late 1960s



Present-day street view



The monument was moved and now stands in front of the bank.

MAP No.

12



Former *toyaba* site

Fulfilling the vital function of arranging horses and porters, and accommodation



Rotating porters and horses at the *toyaba*
(Rotating Porters and Horses at Fujieda-juku — Utagawa Hiroshige)

The *toyaba* was where the transport of travelers' luggage and their accommodation was coordinated.

Among the major positions at the *toyaba* were the *toiya* (responsible for organizing and supervising porters and horses), *toshiyori* (assisting the *toiya*), *chozuke* (responsible for keeping financial records and other business matters), and *umasashi* (responsible for grooming and care of the horses and giving transport instructions). Advance notice documents were delivered

to the *toyaba* when feudal lords, leading government officials, priests of the imperial family, and other VIPs were to pass through.

Retainers who entered the post station in advance of their masters would discuss accommodation arrangements with the *honjin* official and representative of the *hatagoya* association at the *toyaba*. The *toiya* was also responsible for coordinating the porters and horses needed to transport the luggage.



Fushimiya / Fushimiya Kyugoro Residence

Seiji merchant family of 19 generations in which the Kyugoro name continued for 15 generations



Present-day store



Firm-fitting timber joinery in the storehouse



Kayoi tokkuri (sake bottles brought by customers) recall the era when sake was sold by measure.

data

- ▶ Fushimiya Co., Ltd.
- ▶ 1-6-28 Seiji, Sugito-machi
- ▶ 0480-32-0009

Storehouse tours are available.

* Contact the store owner for a storehouse tour.



The store has been connected with brewers since foundation.



Fushimiya is a merchant house founded by Fushimiya Kyugoro, and is currently a liquor retailer. According to the owner, the storehouse was built more than 150 years ago, and is still being use for storage.

TIME TRIP



Ryuto Lantern Festival



Ryuto-e — Origin of the Ryuto Lantern Festival

Photo: Provided by Bunkaisha Printing Company

data

Furutone River Ryuto Lantern Festival

- ▶ Held early August
- ▶ Sugito Tourist Association
- ▶ 1-10-21 Sugito, Sugito-machi
- ▶ 0480-32-3719

Seiji Bridge around 1956. A shipping agency operated during the Edo Period.

Photo: Provided by Masayuki Tanuma



Spectacular fireworks and elegant lanterns



Enchanting beauty of lanterns floating in the evening twilight